

Bolsover Street, W1

Gross internal area (approx.)

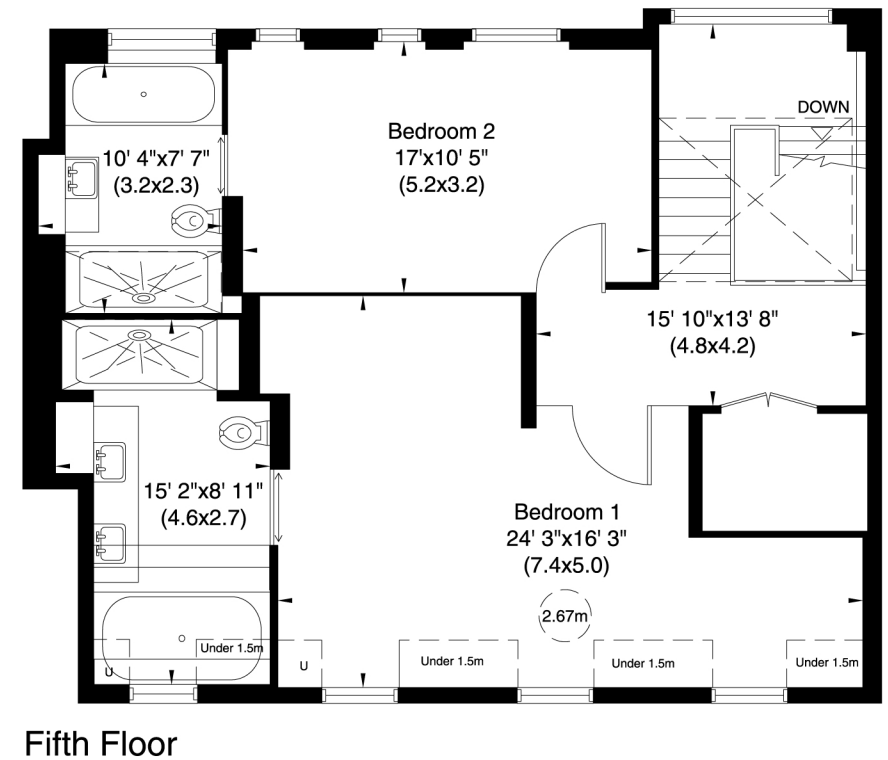
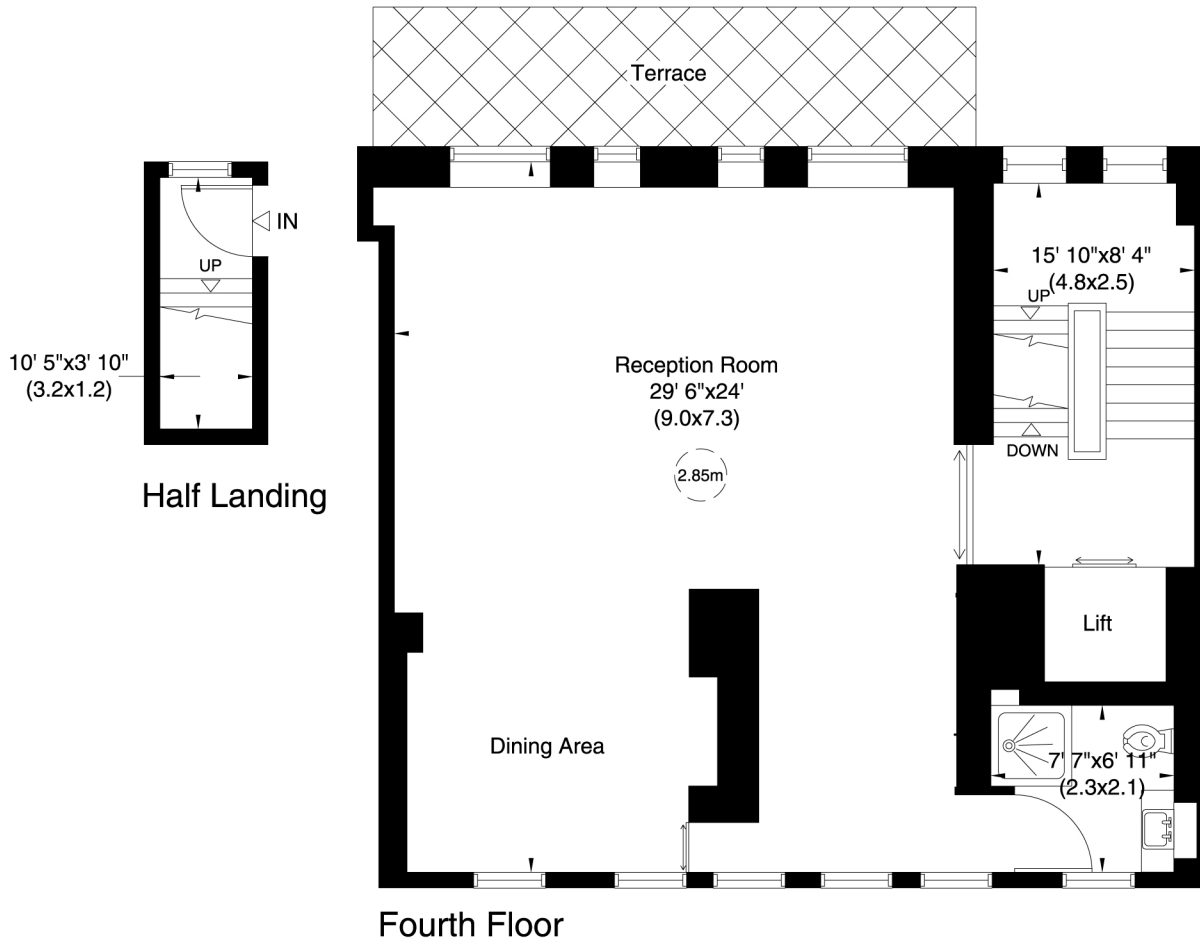
174 Sq m (1875 Sq ft) Including Under 1.5m

171 Sq m (1837 Sq ft) Excluding Under 1.5m

For identification only, Not to Scale



Floor Plan by **capital group** 020 8671 7722



Not to scale, for guidance only and must not be relied upon as a statement of fact. All measurements and areas are approximate only (and have been prepared in accordance with the current edition of the RICS Code of Measuring Practice).